

## CAUTIONS



To prevent serious personal injury and/or property damage, operate all remotely controlled models in a responsible manner as outlined herein.

**CHOOSE THE RIGHT PLACE TO OPERATE YOUR R/C MODEL.**

- CHOOSE THE RIGHT PLACE TO OPERATE YOUR RC MODEL**
- Do not run on public streets or highways. This could cause serious accidents, personal injuries, and/or property damage.
  - Never run R/C models near people or animals.
  - To avoid injury, do not run in confined spaces.
  - Do not run where loud noises can disturb others, such as hospitals and residential areas.
  - Never run indoors. There is a high risk of fire and/or damage.

**INSPECT YOUR MODEL BEFORE OPERATION.**

- Make sure that all screws and nuts are properly tightened. It is also a good idea to use removable thread lock wherever metal screws go into metal, especially for engine mounts and the engine pilot shaft.
- Always use fresh batteries for your transmitter and for your receiver to avoid losing control of the model.
- Always test the brakes and throttle before starting your engine to avoid losing control of the model.
- Make sure no one else is using the same radio frequency as you are using.

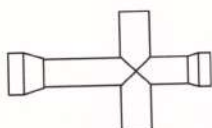
**1/10 SCALE OFF-ROAD 4WD SERIES MANUAL**

### Addition Accessories 配送工具

Hex Wrench 六角扳钳



Small Cross Tool 小十字套筒



## Tools Recommended 推荐工具

**Hex screwdrivers**  
内六角螺丝刀



Hex wrench  
Inbusschlüssel  
Stichschlüssel



Modeling knife




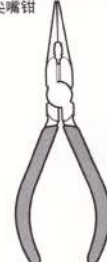
Side cutter  
Seitenschneider  
Pincès coupantes  
剪钳



Curved scissors  
Schere  
Ciseaux  
剪刀



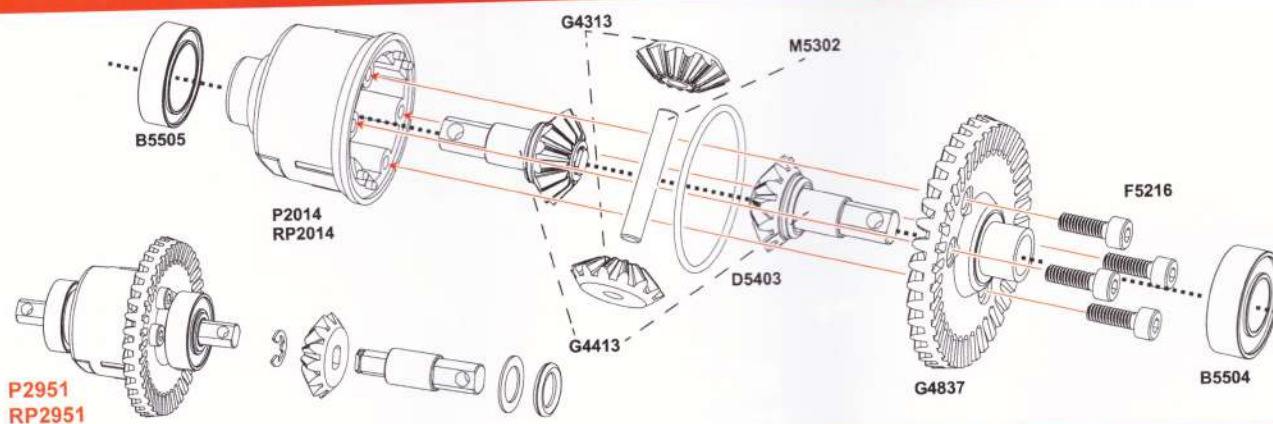
Long nose pliers  
Flachzange  
Pinces à bcs longs  
尖嘴钳 



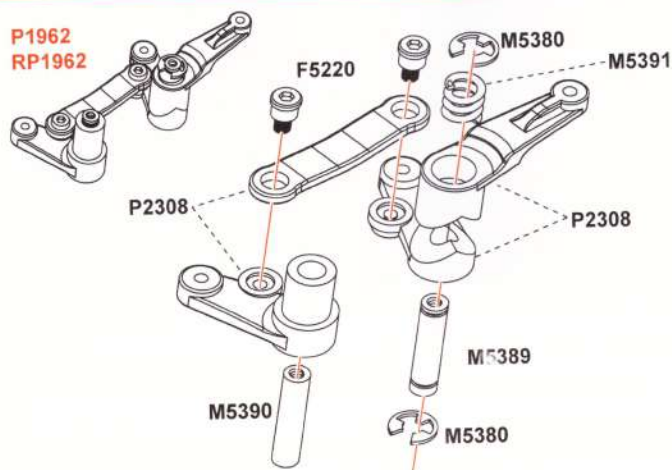
Model Glue  
模型胶水



## Differential Gear Box Assembly 差速器总成

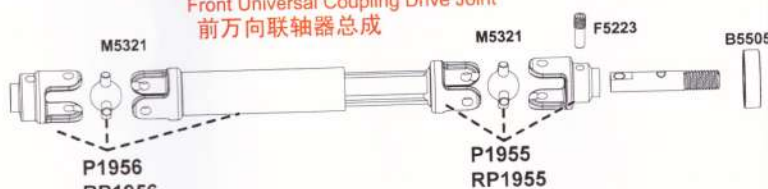


## Servo Saver/Steering Assembly 转向缓冲总成



Universal Coupling Drive Joint 万向联轴器总成

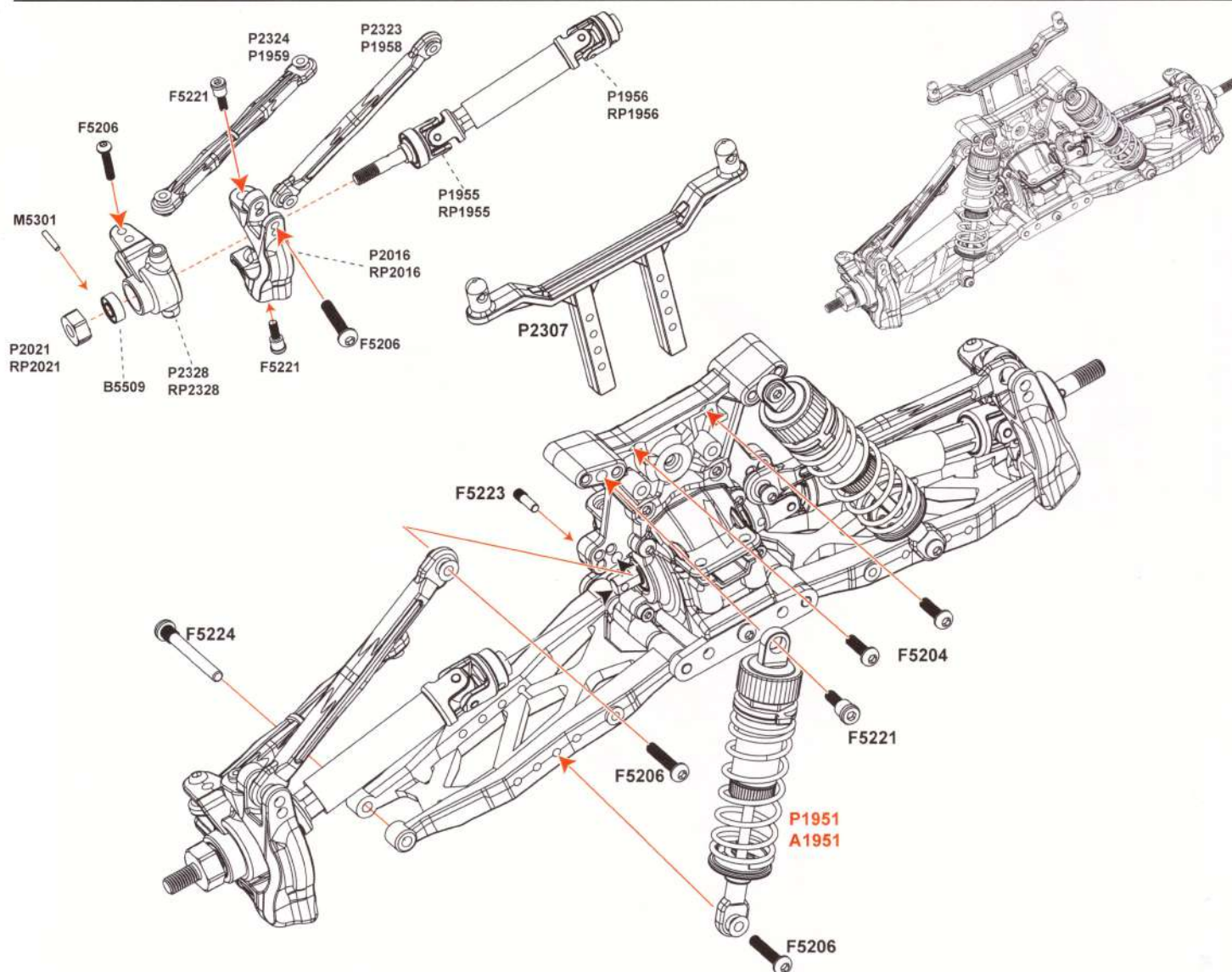
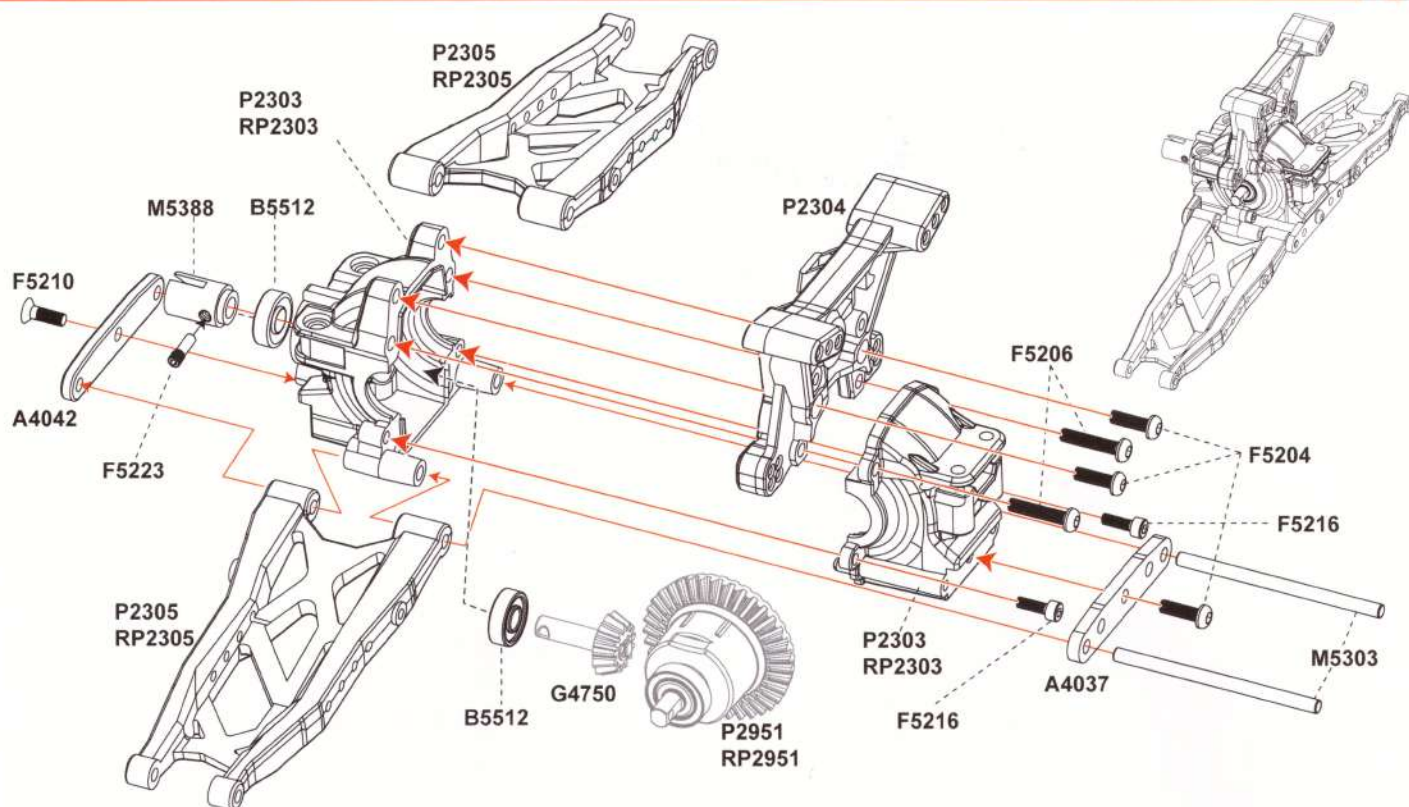
Front Universal Coupling Drive Joint  
前万向联轴器总成



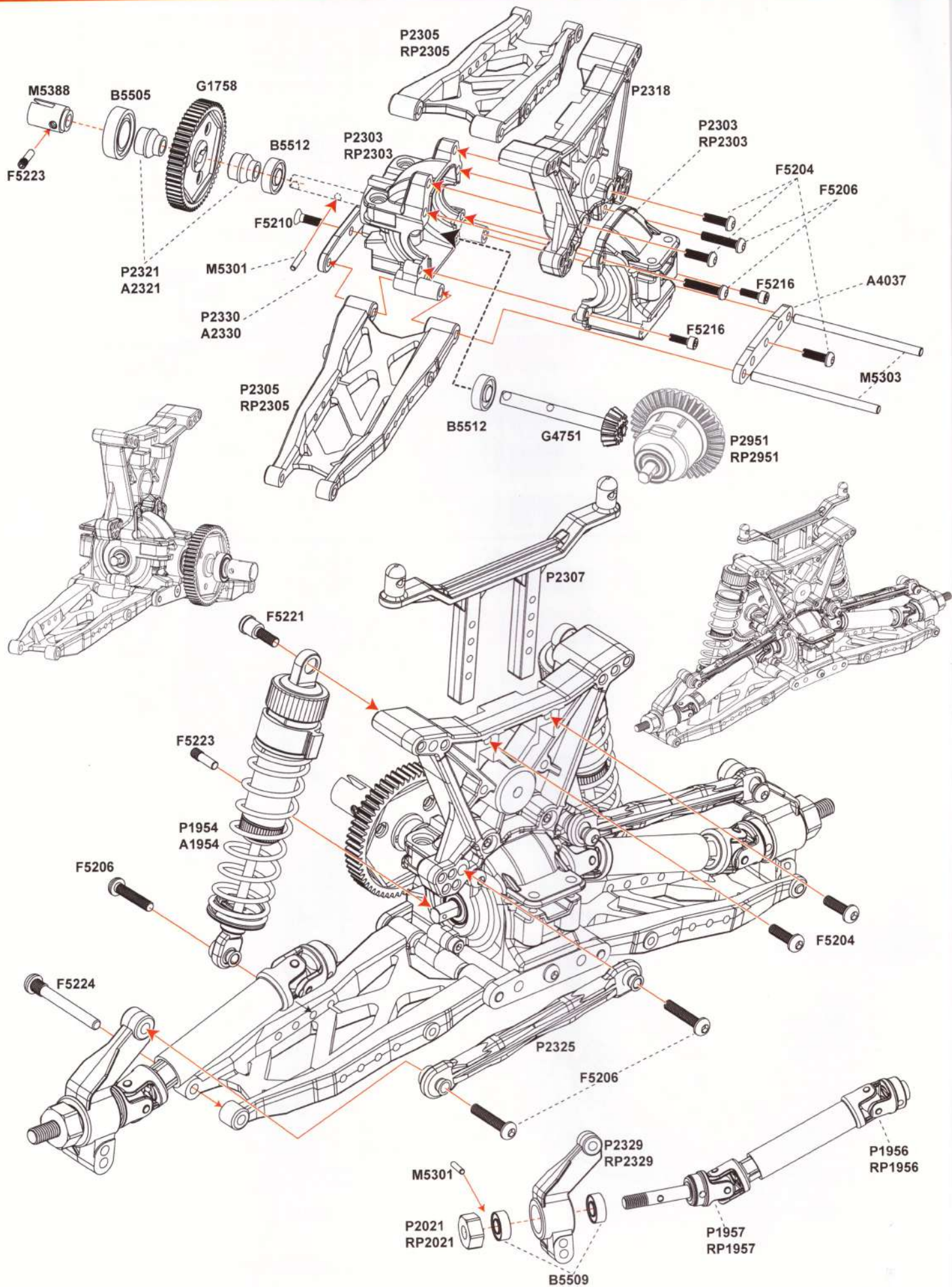
### Rear Universal Coupling Drive Joint 后万向联轴器总成



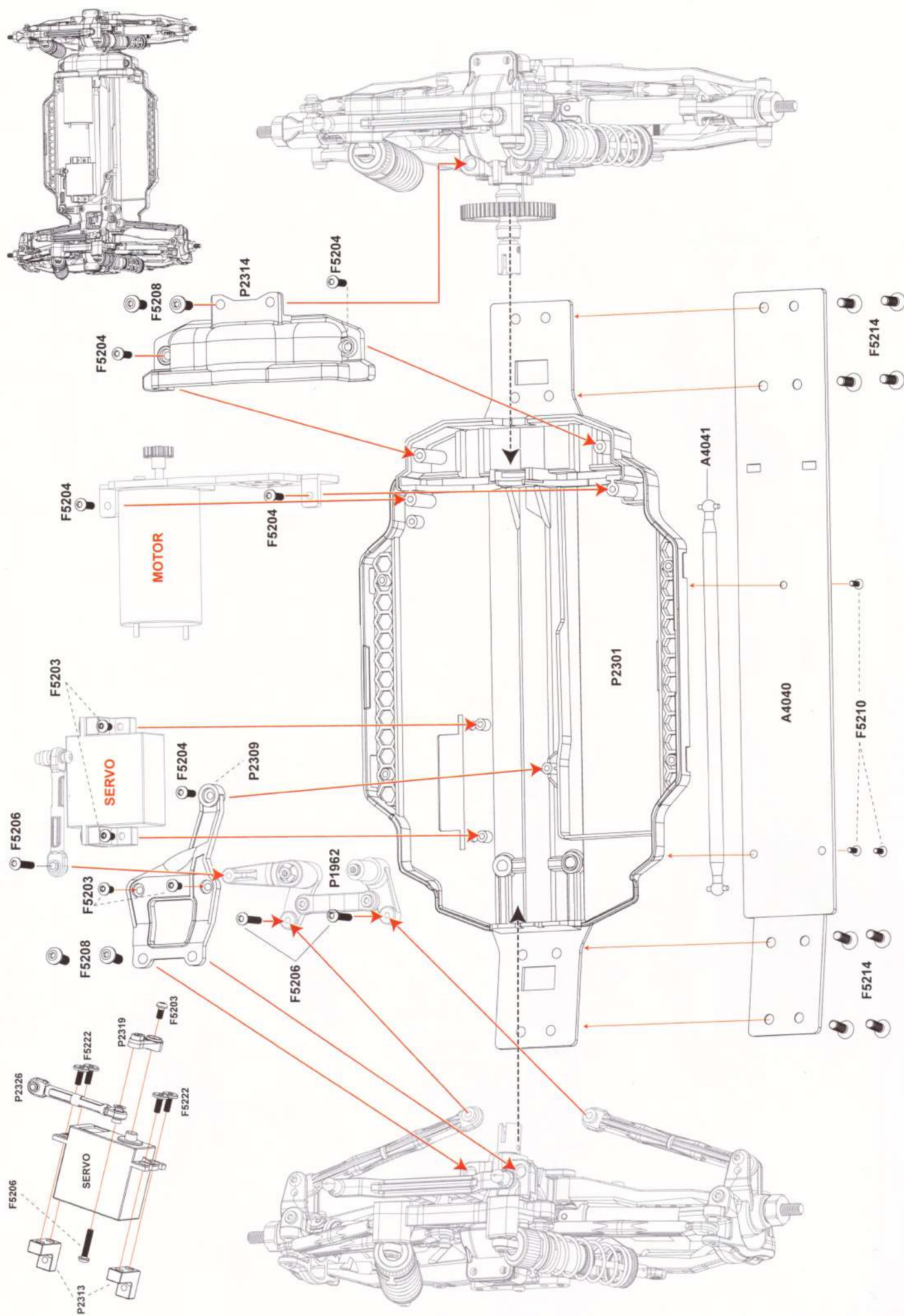


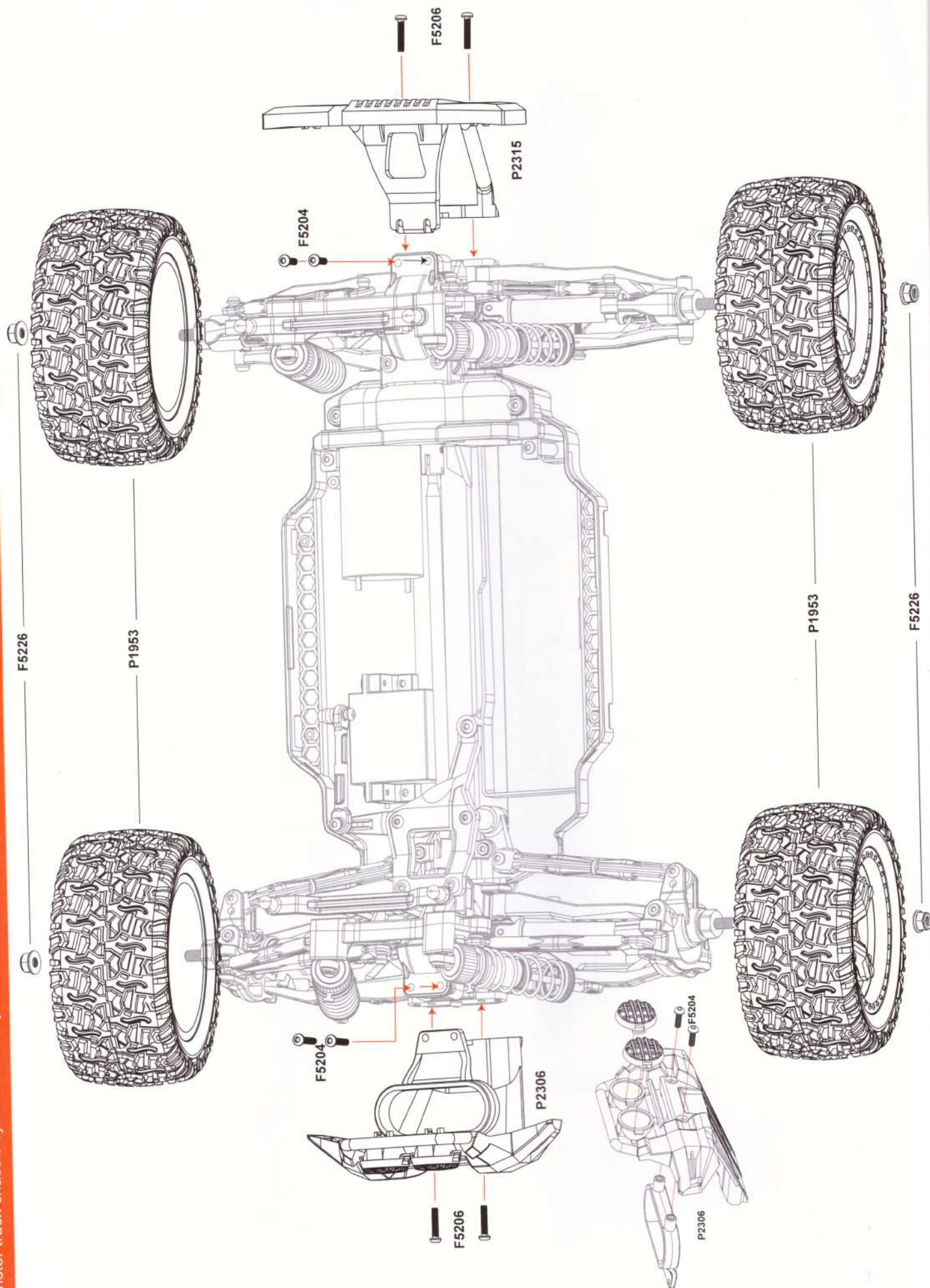








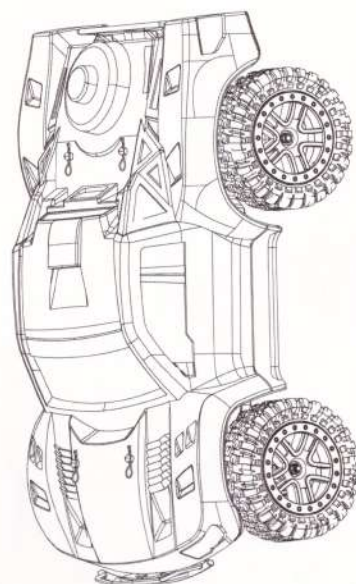
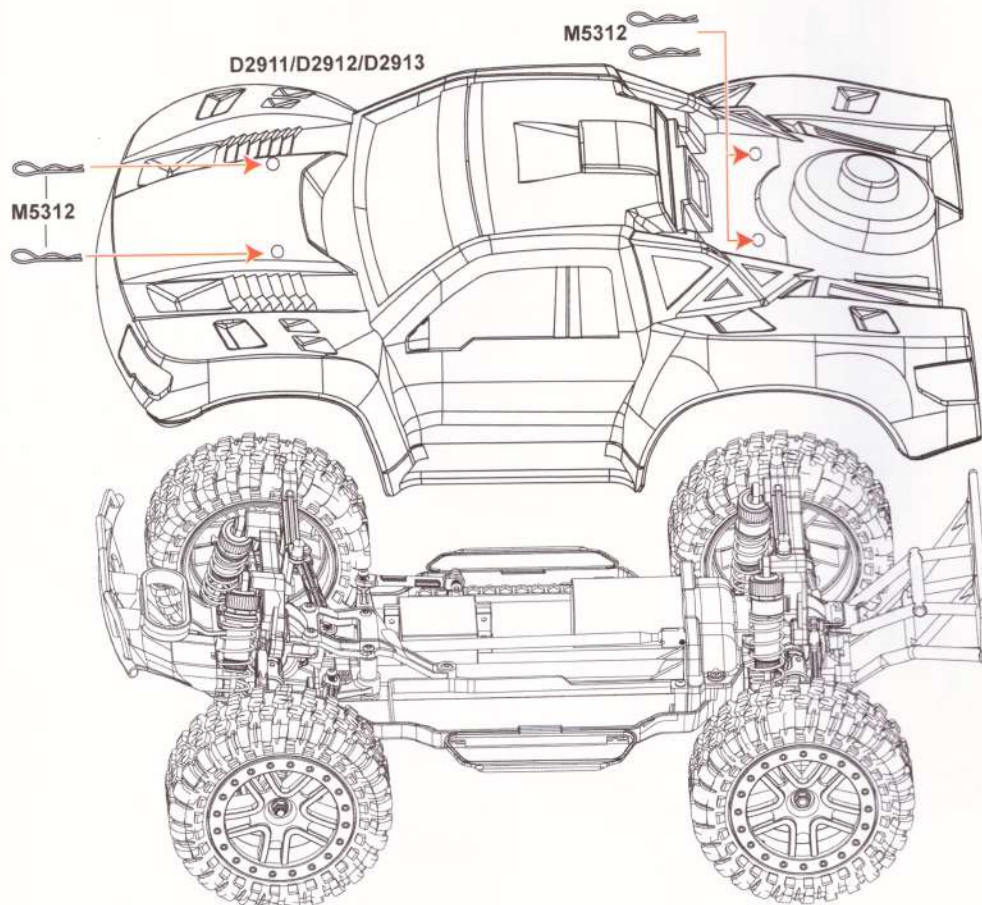
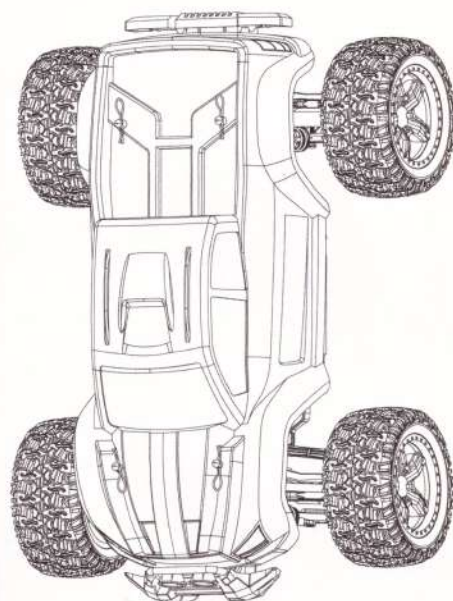
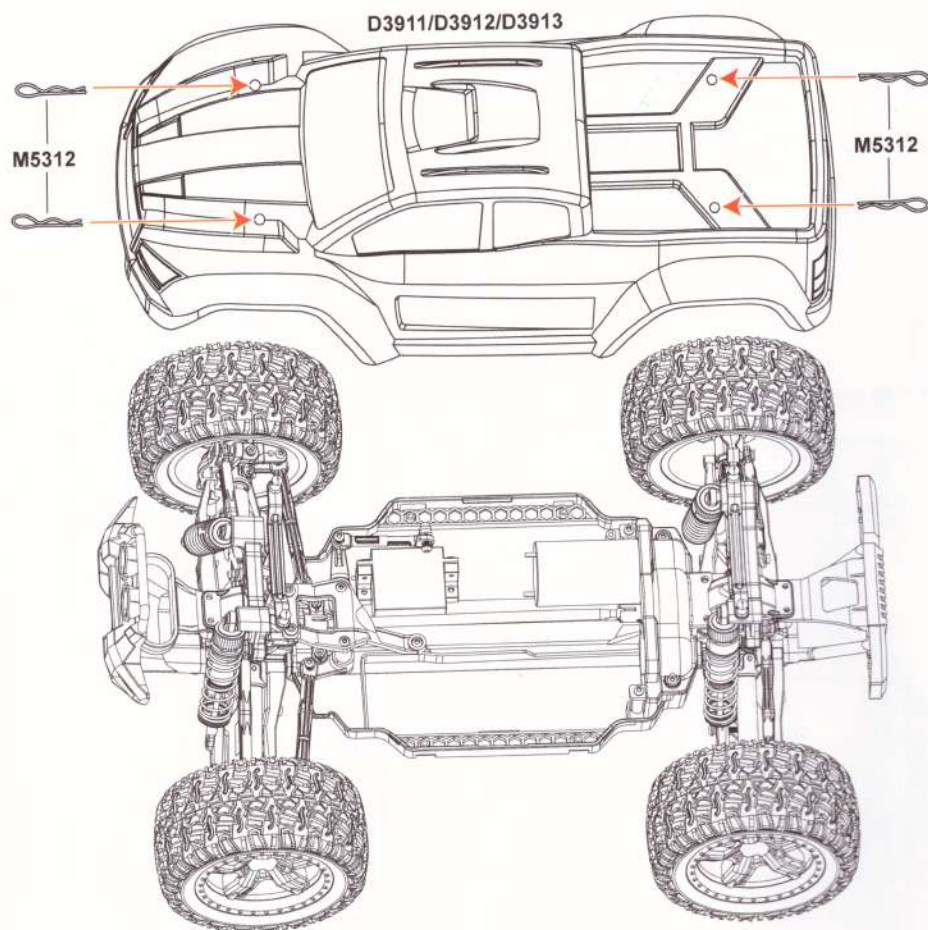




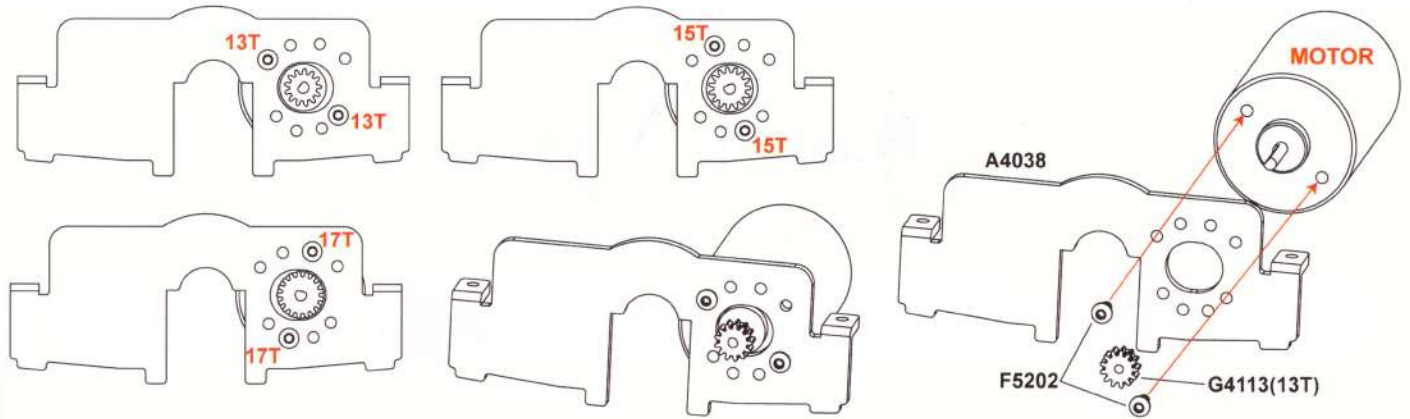




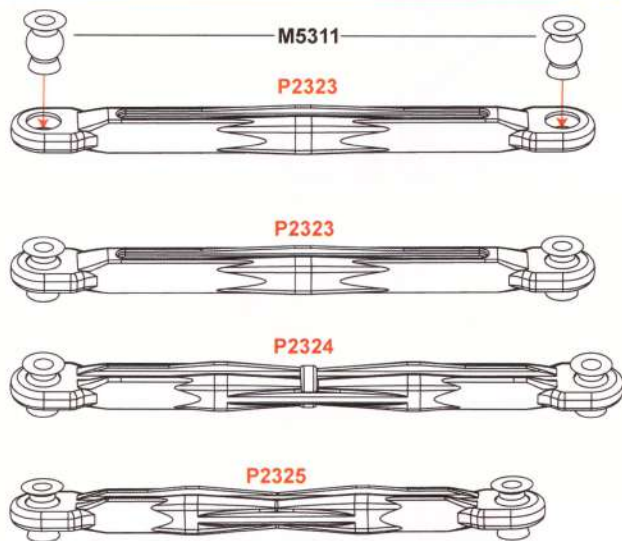






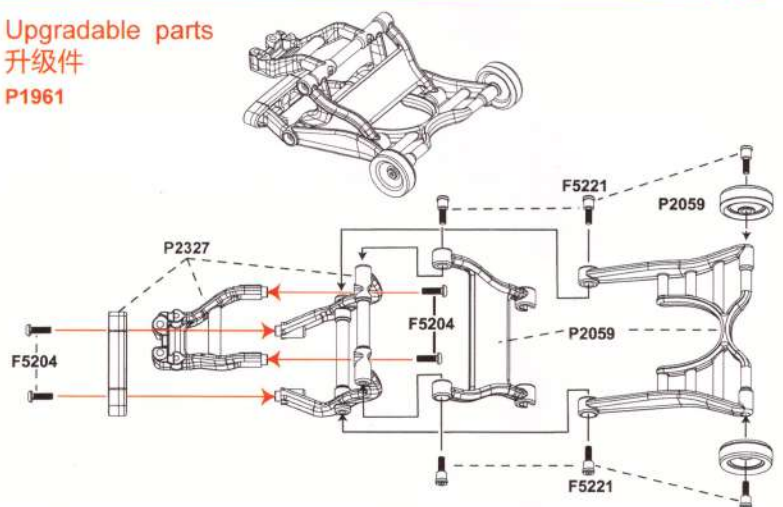


Ends rear 拉杆安装图

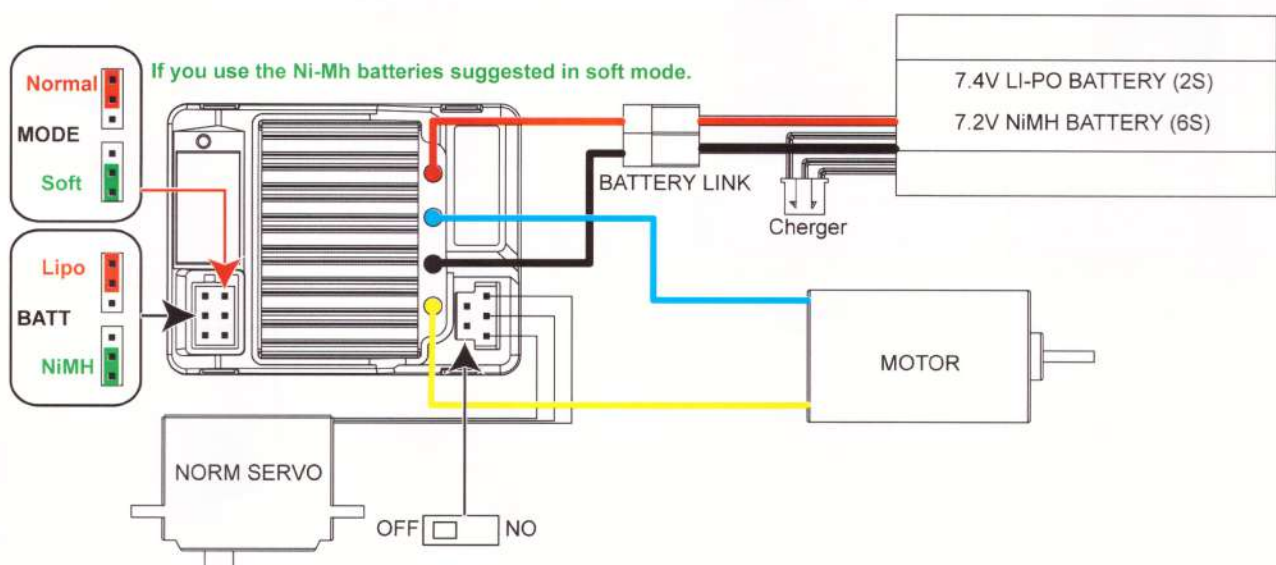


Wheelie bar Assembly 抬头架总成

Upgradable parts  
升级件  
P1961



Electronic diagram of system installation 电子系统安装图



Caution:  
due to technique updates constantly,  
pictures are for reference only,  
products are subject to availability.

由于技术不断更新, 配件、数据  
和图片有所不同, 以实物为准!